



Special Editions

We produce a number of 'Special Editions' – listings of grants or training courses dealing with a particular topic or discipline.

- | | |
|----------------------|---------------------|
| Dentistry | Cancer Research |
| Fellowships | Children |
| Research Methodology | Heart Disease |
| Pharmacy | Diabetes |
| Primary Care | Genetics |
| Travel Awards | Mental Health |
| Professional Bodies | Older People |
| Public Health | Stem Cells |
| Stroke Research | Immunology |
| Clinical Trials | Plus many more..... |

RDInfo

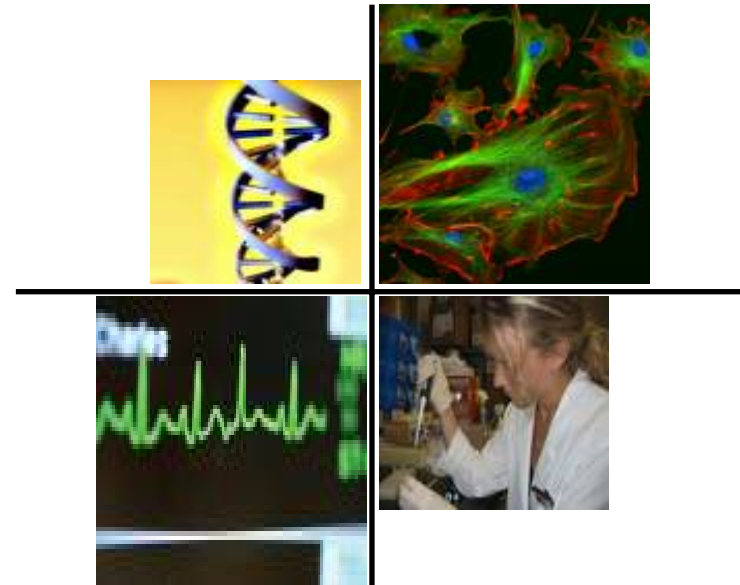
www.rdinfo.org.uk

Plus many other facilities like

RESEARCH PROCESS FLOWCHART



RDInfo
34 Hyde Terrace,
Leeds
LS2 9LN
0113 2951122
info@rdinfo.org.uk
www.rdinfo.org.uk



Funding Opportunities

Register now to receive up to date information on over 5300 awards

RDInfo is part of the National Institute for Health Research

Central Commissioning Facility (CCF) Managed Programmes:

Research for Patient Benefit Programme (RfPB) ~ £25 million available each year

This is a national response mode programme for high quality investigator-led research projects that address issues of importance to the NHS. It funds research into everyday practice in the health service. Proposals will be identified by health service staff, and developed by them with appropriate academic input.

Register for Intent: Applications are accepted at anytime through a single-stage electronic process and will be considered at the next available Regional Committee meeting.

Programme Grants for Applied Research ~ £75 million will be available each year.

These are prestigious awards of up to £2m over a period of three to five years, directed towards leading researchers who can demonstrate an impressive track-record of achievement in applied health research. Each programme will fund a series of related projects, which form a coherent theme in an area of priority or need for the NHS. The Programme Grants are awarded by open competition via a two-stage process.

Closing date for outline applications: 16th March 2009

Programme Development Grants ~ £20,000-£50,000 Over 6-18 months available

A Programme Development Grant enable a research team to undertake preparatory work that will position them to submit a successful Programme Grant application in a subsequent funding competition.

Closing Date is : Competition 1 30th March 2009 Competition 2 13th July 2009

Research for Innovation, Speculation & Creativity (RISC) ~ £5 million will be available each year

RISC is a response mode funding programme established to provide research of direct benefit to users of the NHS in England. It provides small, discrete grants for new speculative and radical health research proposals that could lead to a step change in the care and management of patients. These awards are intended particularly for speculative, novel proposals that are unlikely to gain support during traditional peer review processes.

Applications are sought through an annual competition.

Invention for Innovation Programme (i4i) ~ Future Product Development

i4i provides funds and support to enable ideas for new healthcare products to progress from post basic research to pre large scale clinical trials or health technology assessments.

Stream 1:i4i ~ Deadline is 13th March 2009

Stream 2:i4i ~ Deadline is 3rd April 2009

Stream 3a (FPD3a) ~ Deadline 22nd May 2009

Stream 3b i4i~ Deadline 13th March 2009

Evaluation, Trials and Studies Co-ordinating Centre Managed Programmes:

Public Health Research Programme ~ Fund for 2009/2010 is £5 million

Aim: To evaluate public health interventions: specifically, it will provide new knowledge on the benefits, costs, acceptability and wider impacts of non-NHS interventions intended to improve the health of the public and reduce inequalities in health.

Closing date for applications: 3rd June 2009.

Health Services Research Programme ~ £5 million available each year

Aim: To evaluate public health interventions: specifically, it will provide new knowledge on the benefits, costs, acceptability and wider impacts of non-NHS interventions intended to improve the health of the public and reduce inequalities in health.

The programme expects outline proposals will be sought in June 2009

Efficacy and Mechanism Evaluation Programme

The programme supports excellent clinical science with an ultimate view to improving health or care of patients with a remit to include clinical trials and evaluative studies which:

- Add significantly to the understanding of biological or behavioural mechanisms and processes
- Explore new scientific or clinical principles
- Evaluate the effectiveness of interventions
- Include the development or testing of new methodologies

Applicants can submit an outline proposal at anytime, however there will be 3 deadlines per year.



Health Technology Assessment (HTA)

HTA produces independent research information about the effectiveness, costs and broader impact of healthcare treatments and tests for those who plan, provide or receive care in the NHS.

- Evidence Synthesis (Full Proposals)
- Primary Research (Outline Proposals)

Closing date for applications : 15th April 2009

- Clinical Evaluation and Trials

Closing date for applications: 22nd April 2009

Other National Institute for Health Research Programmes:

Physical Environment Research Programme ~ Fund for 2008/2009 is £420,000

Aim: To fund research that benefits patients by improving the way property and facilities are managed and maintained. Promoting safe, high quality & best value design.

Applications can be made at any time.

Administered by the NHS Estates and Facilities Division

NIHR Service Delivery & Organisation (SDO) improves health outcomes for people by:

- Commissioning research and producing research evidence that improves practice in relation to the organisation and delivery of health care, and
- Building capacity to carry out research amongst those who manage, organise and deliver services and improve their understanding of research literature and how to use research evidence.

They offer one-off calls with specific themes for a limited time period.



Research Capacity Development Programme

makes research training awards to individuals who show the potential to become research leaders in their particular field and whose research is people of patient-focussed and relevant to the NHS- NIHR Fellowship Scheme:-

- Doctoral Research Fellowship
- Post-Doctoral Fellowship
- Career Development Fellowship
- Senior Research Fellowship

Applications are sought through an annual competition.

Department of Health Funded Programmes:

The Policy Research Programme (PRP) is a national programme of research dedicated to providing an evidence base for policy-making in the Department of Health

They offer one-off calls with specific themes for a limited time period.